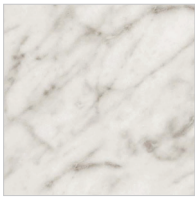


## Multi-Family Program

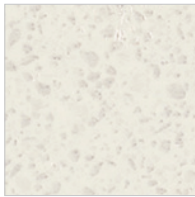
Hartson-Kennedy has extensive experience working with multi-family projects — from apartment complexes to senior living communities, university dorms and more. If you have a project like this, our Commercial Project Department will work with you to quote, process, and schedule your project orders. For new construction or rehabilitated units, our products will meet the lead-times necessary for demanding, fast-track development.

### Formica® Brand Laminates

#### Group A Finishes



**6696-58, -43**  
Carrara Bianco



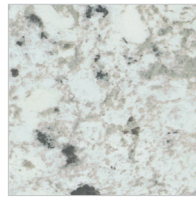
**6698-58**  
Paloma Polar



**6314-58**  
Neo Cloud



**7735-58**  
Portico Marble



**9476-58, -43**  
White Ice Granite



**6697-58**  
Argento Romano



**9525-58**  
White Shalestone



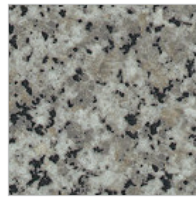
**9306-58**  
White Bardiglio



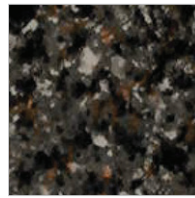
**9497-58**  
Silver Quartzite



**8831-58**  
Elemental Stone



**86201-90**  
Rose Granite

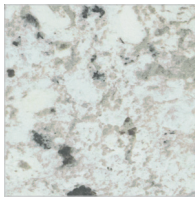


**86551-90**  
Ebony Granite

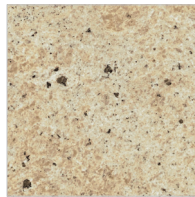
#### Group B Finishes



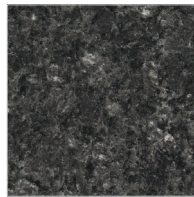
**6696-46**  
Carrara Bianco



**9476-46**  
White Ice Granite



**6226-46**  
Ivory Kashmir

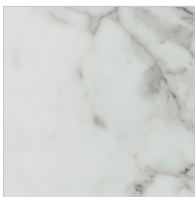


**6280-46**  
Midnight Stone



**3690-34**  
Basalt Slate

#### Group C Finishes



**3460-46**  
Calacatta Marble



**5018-11**  
Calacatta Cava



**7402-11**  
Pietra Grafite



**6319-43**  
Cafe Azul

## The facts...

Simple kitchen renovations boost rental and sale rates anywhere from 10-30%.† Coming in at least less than 50% the cost of real stone, Formica® Laminate is the cost effective solution for any multi-family spaces and can yield large returns.



6314-58 Neo Cloud



9476-46 White Ice Granite



6319-43 Cafe Azul

## Know the difference

FORMICA® BRAND LAMINATE	GRANITE & QUARTZ
√ Quick, light & easy install	• Install requires special tools & heavy lifting
√ Lowest surfacing price point	• Mid to high price point
√ Attractive with a wide variety of styles	• Attractive, though limited style offering
√ EliteForm Technology for best in class scratch resistance & durability	• Durable, but can scratch & chip (difficult to repair)
√ Simple & worry-free cleaning with everyday household cleaners	• Requires special maintenance cleaners and sealing (granite only)
√ Does not promote bacterial growth*	• Vulnerable to bacterial growth (granite only)

\* The melamine surface of laminate does not sustain microbes with regular cleaning.

† Source: [http://www.multifamilyexecutive.com/design-development/renovations/rehab-roi-which-upgrades-cause-the-biggest-rent-bumps\\_o](http://www.multifamilyexecutive.com/design-development/renovations/rehab-roi-which-upgrades-cause-the-biggest-rent-bumps_o)